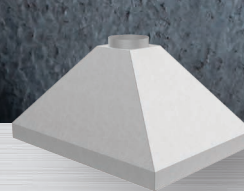




INDUSTRIAL HOODS

**KEES WAS FOUNDED ON HOODS.
AND NO ONE BUILDS THEM BETTER.**

Every exhaust system is different—one size never fits all. KEES understands the capture hood is an integral part of the exhaust system and needs to be tailored to its environment to remove airborne contaminants effectively and ensure healthier indoor air. That is why we'll make our standard designs in any size or material and create custom solutions when needed. Since day one we've followed what our founder said some 40 years ago, "If you can draw it, we can build it." With virtually unlimited construction options and unique features, your standard or custom exhaust ventilation solution will work effectively and stand up reliably for years to come. Let's see what KEES can do for you.



OVERHEAD HOODS



SLOTTED HOODS



**INTEGRATED WORKSTATIONS
& SOURCE CAPTURE OPTIONS**

CAPTURE AIRBORNE CONTAMINANTS—AND EVERY NEED.

- Our unique industrial hoods are matched to your specific airflow and dimensional requirements.
- Broad range of overhead hoods, slotted hoods, or integrated workstations and source capture options.
- Decades of experience ensure optimal hood design and fabrication.
- Our custom sizing ensures a perfect fit. No size is too large and every size can be specified down to .001".



KEES solutions are tailored to your application. Consider baffles, filters, lighting, multiple sections and material options.

CONSTRUCTION OPTIONS

MATERIALS

- Various materials for the specified environment
 - Galvanized steel
 - Stainless steel
 - Aluminum
 - Thermoplastic
- Various gauges to meet size and strength requirements

FINISHES

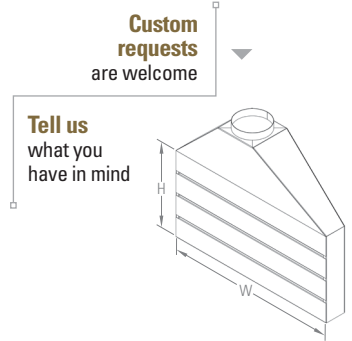
- Mill
- Painted—standard and custom colors
- Satin polish
- Epoxy
- Heresite
- Teflon

COLLAR OPTIONS

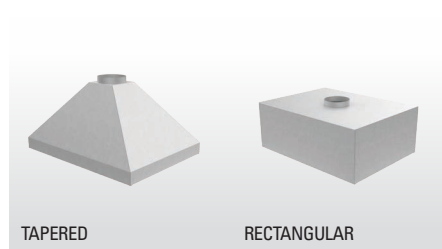
- Round or rectangular
- Multiple collars
- Custom placement

SIZE

- No limits, we'll build your industrial hood to meet any airflow or dimensional requirements



OVERHEAD HOODS



TAPERED

RECTANGULAR

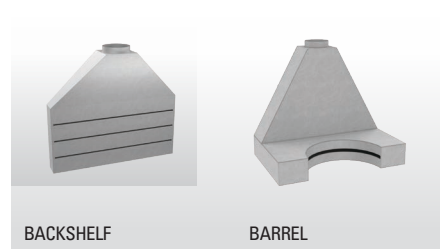
SHAPES

- Multiple shapes based on capture requirements
 - Tapered
 - Rectangular
 - Custom

ADDITIONAL OPTIONS

- Filters
- Baffles
- Mounting brackets
- Lights
- Vinyl strip curtains
- Swing arm
- Motorized hoist
- Side skirts
- Backsplash panels
- Blast gates

SLOTTED HOODS



BACKSHELF

BARREL

SHAPES

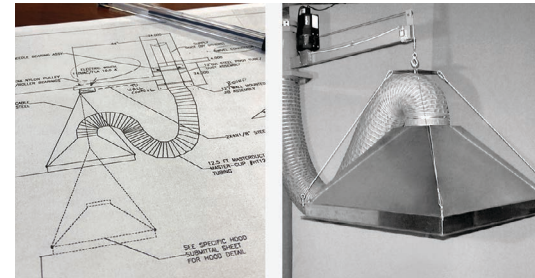
- Multiple shapes based on capture requirements
 - Backshelf
 - Barrel
 - Custom

ADDITIONAL OPTIONS

- Filters
- Removable panels
- Mounting brackets
- Side skirts
- Work table
- Blast gates

INTEGRATED WORKSTATIONS & SOURCE CAPTURE OPTIONS

- Paint booth
- Floor sweep
- Downdraft table
- Grinding hood
- Custom enclosure hood



THE UNIVERSITY OF WISCONSIN, Center of the Arts, needed stainless steel hoods to capture metal casting contaminants near their source. But there was a unique request—could the hoods move up and down and radially at different stages of the casting process? KEES, of course, said “yes,” and engineered a custom solution that put effective ventilation exactly where it was needed.

OTHER SATISFIED CUSTOMERS

- | | |
|--------------------------------|---------------------------------------|
| Bayer Pharmaceutical | Underwriters Laboratories |
| FedEx Corporation | Jack Daniel Distillery |
| Bloomfield Hills High School | Sacramento Wastewater Treatment Plant |
| Goodyear Tire & Rubber Company | Ford Motor Company |



BENDING METAL · SCULPTING AIR

RELATED SOLUTIONS | AIR HANDLING UNITS, FANS & ACCESSORIES | DROP BOX DIFFUSERS | STAINLESS STEEL GRILLES & DIFFUSERS

KEES.COM | 920.876.3391 400 SOUTH INDUSTRIAL DRIVE, ELKHART LAKE, WI 53020